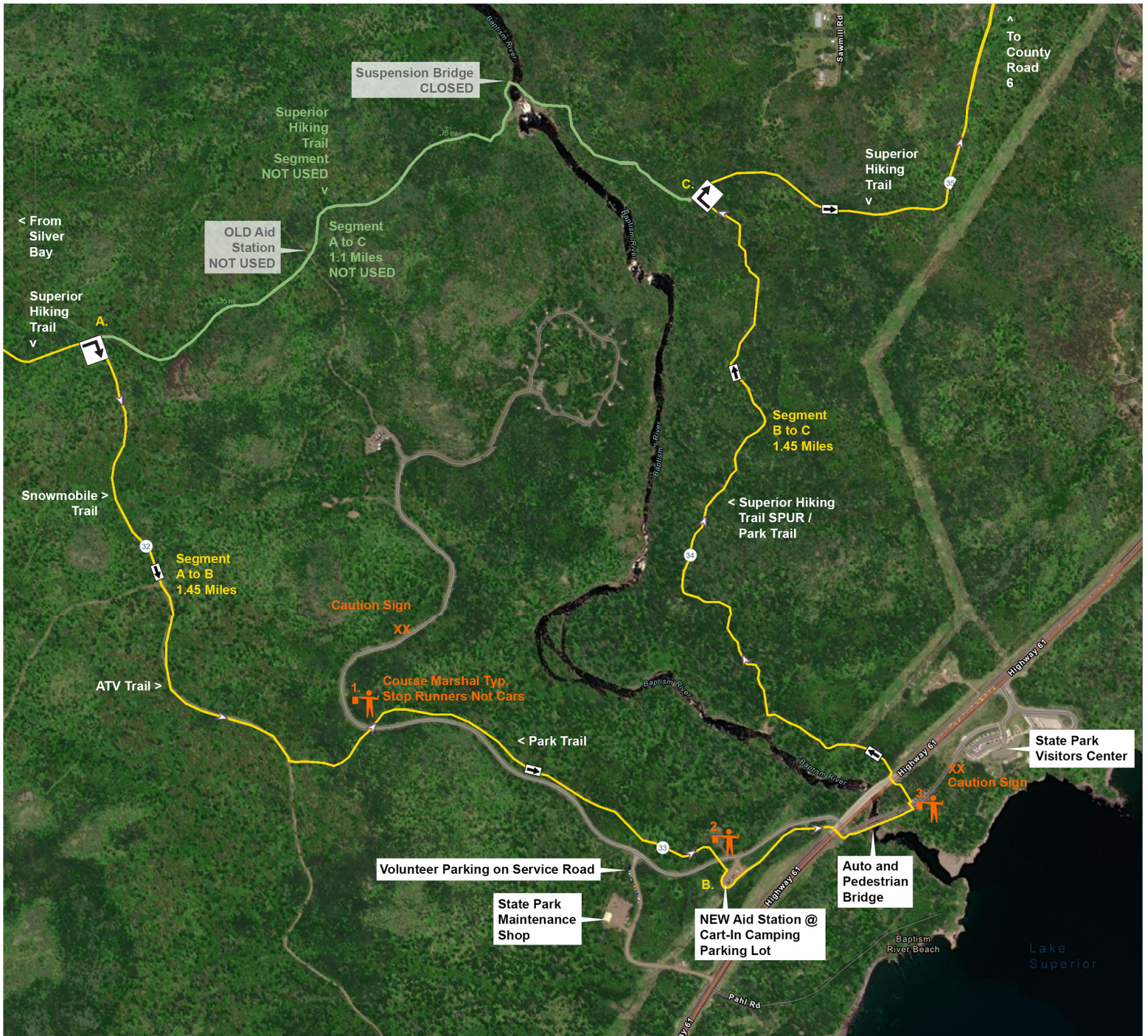


Superior 100 Tettegouche Reroute and Logistics

Updated 8/25/22 2:50PM CST



NO CREW ACCESS ALLOWED AT TETTEGOUCHE

The suspension bridge over the High Falls of the Baptism River within Tettegouche State Park was damaged during historic flooding in May of 2022. The bridge has been closed indefinitely until it can be replaced.

As a result of the bridge closure the Superior 100 Mile Trail Race race course will be rerouted through Tettegouche State Park. We will make use of a series of non-SHT trails within the park. Runners will come off of the Superior Hiking Trail in order to cross the Baptism River via the parks auto and pedestrian bridge adjacent to the Highway 61 bridge, both of which are just above Lake Superior. This will add approximately 1.8 miles to the race.

The non-SHT trails being used, cross the main park road three times. There will be course marshals at each crossing. Course marshals will stop runners, not cars - runners crossing once it is safe to do so.

The new aid station location will be in the cart-in campsite parking lot / trailhead off of the park road. There will be no crew access allowed at Tettegouche this year. Drop bags will be allowed (they usually are not). There will be a portable toilet at the aid station.

Aid Station and Course Marshal volunteers will park on ONE side only of the service road leading to the state park maintenance shop. The aid station captain, and HAM Radio volunteers may park in the cart-in campsite parking lot / trailhead if needed / if space allows. The aid station will be located in the loop / turnaround on the Southwest end of the parking lot (it is OK to block this off), not in the parking spaces within the lot.